



The American Orthopaedic  
Society for Sports Medicine

## SPORTS TIP

# Rotator Cuff Tears

EXPERT CONSULTANT: Dan Solomon, MD

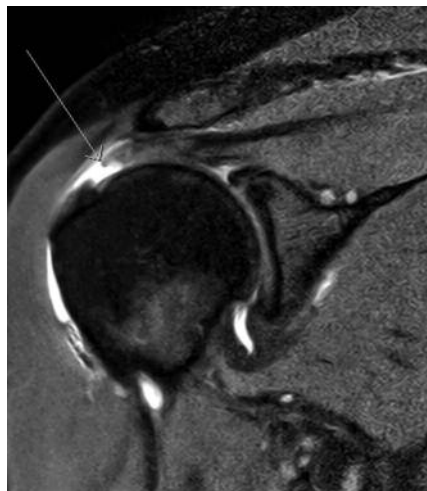
### What is the rotator cuff and what does it do?

The rotator cuff is a group of four muscles and their tendons that combine to form a “cuff” around the head of the humerus (the upper end of the arm). The four muscles—supraspinatus, infraspinatus, subscapularis, and teres minor—originate from the scapula (shoulder blade). The tendon for each muscle inserts on the tuberosities of the humerus.

The rotator cuff helps to lift and rotate the arm and to stabilize the humerus within the joint.

### What causes a rotator cuff tear?

A rotator cuff tear may result from an acute injury such as a fall or may be caused by chronic wear and tear with degeneration of the tendon. Pinching of the tendon on the undersurface of the scapula may contribute to cuff tears in individuals older than 40 years.



Rotator cuff tear on an MRI

### How are rotator cuff tears diagnosed?

Rotator cuff tears are diagnosed based on examination and/or a diagnostic study such as MRI (magnetic resonance imaging) to confirm the diagnosis. Early diagnosis and treatment of a rotator cuff tear may help improve treatment results.

### What is the treatment for a rotator cuff tear?

The goals of treatment are to relieve pain and restore strength to the involved shoulder. Many rotator cuff tears can be treated nonsurgically. Anti-inflammatory medication, steroid injections, and physical therapy may all be of benefit in treating symptoms of a cuff tear. Even though a full-thickness tear cannot heal without surgery, satisfactory function can often be achieved with non-surgical treatments.

### At what point does a rotator cuff tear require surgery?

Surgery is recommended if there is persistent pain or weakness in the shoulder that does not improve with nonsurgical treatment. Frequently, patients who require surgery will report pain at night and difficulty using the arm for lifting and reaching. Many will report ongoing symptoms despite several months of medication and limited use of the arm.

Surgery is also indicated in active individuals who use the arm for overhead work or sports.

### What options are available for surgical repair?

The type of repair performed is based on the findings at surgery. A partial tear may require only a trimming or smoothing procedure called a débridement. A full-thickness tear with the tendon torn from its insertion on the humerus is repaired directly to bone.

Three techniques are used for rotator cuff repair:

- open repair (through a traditional incision)
- mini-open repair (partially assisted by a camera view, with a smaller incision)
- arthroscopic (performed with only a small camera inserted through multiple small puncture wounds)

### What does the recovery and rehabilitation process entail?

Rehabilitation plays a critical role in both the nonsurgical and surgical treatment of a rotator cuff tear. Typical recovery can be six months or more depending on the extent of the tear.

When a tear occurs, there is frequently loss of motion of the shoulder. An exercise or physical therapy program is necessary to regain strength and improve function in the shoulder.

Even though surgery repairs the defect in the tendon, the muscles around the arm remain weak, and a strong effort in rehabilitation is necessary for the procedure to succeed. Complete rehabilitation after surgery may take several months.